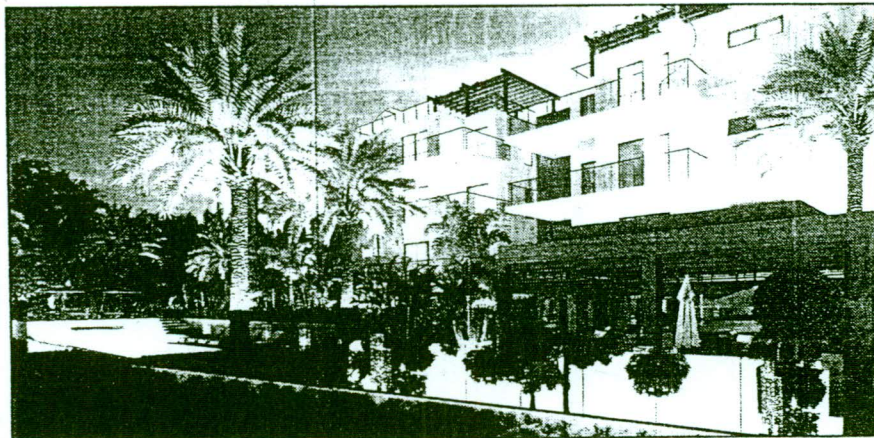


(\$) BUSINESS & FINANCE (\$)

★ A BFSB-spearheaded Industry Working Group is finalizing plans for the 2015 Financial Services Industry Awards Gala Dinner, set for November 20 at the Atlantis resort. This initiative, now in its 15th year, sees awardees chosen for: Executive of the Year - CEO level; Professional of the Year - Any level of Management or Supervision; Achiever of the Year - Junior and Support levels; Financial Services Development and Promotion awards; and Mentor of the Year. The names of all recipients will be kept in secret until the Awards Dinner. Last year, BFSB introduced the "BFSB Appreciation Award" for support to the organisation and its development and promotional activities—historically and ongoing.

This Award also will be presented at the Dinner. And Hope Strachan, Minister of Financial Services, will present a special "Minister's Award", "recognising excellence in all of its aspects." Our photo shows members of the FSI Excellence Awards Working Group at a planning session at BFSB's Offices. Seated (L-R): Joan Pinder, College of The Bahamas; Jacqueline Hunt, Bahamas Institute of Chartered Accountants; and Darnell Osborne, Bahamas Institute of Chartered Accountants; Standing (L-R): Karen Haven, Society of Trust and Estate Practitioners; Fredricka Bowe, BFSB; Anastacia Johnson, Association of International Banks & Trust Companies in The Bahamas; and Simone Longley, Bahamas Bar Association.



Sales brisk at THIRTY | SIX on PI

★ OVER one third of the residences at a sophisticated luxury condominium complex on Paradise Island have been sold prior to the official launch. "Paradise Island is home to many of the world's top business executives, elite athletes and Hollywood celebrities," said Matthew Marco, Director of Sales and Marketing for Aristo Development, which is developing the project in partnership with Sterling Financial Group. "Our goal in designing

THIRTY | SIX was to benefit from those features that have drawn so many successful people to Paradise Island and introduce into that mix an accessible residential property with competitive pricing while maintaining the quality buyers have come to expect." The project is a three-storey condominium consisting of 38 residences on Bay View Drive. Our photo shows the night view of the southern exposure at THIRTY | SIX Paradise Island, Bay View Drive